



A **Cyncly** Company

Version 23.0

Update Document

Table of Contents

System Option	3
Inventory	3
Purchase Order Numbering	3
Human Resources	4
Withholding Changes	4
E-Commerce	4

Introduction

This update to the Windows version of the RFMS Business Management System includes many new features and enhancements. The update also includes many “behind the scenes” changes that increase processing speed and other performance-related functions. This document explains only the new features contained in this update.

For all alterations, see the release notes on the download web page or [Release Notes – RFMS Help Desk \(zendesk.com\)](#)

RFMS Core

RFMS Core Program Suite For Sql

[Rfms Update](#) (Last Download Date 4/8/2021) | [Documentation](#)
[B2B Service](#) | [Manual](#)
[Barfont \(New Installs Only\)](#) | [Documentation](#)
[Release Notes](#) (Last Download Date 4/8/2021)
[RFMS Workstation Components \(New Installs Only\)](#) | [Documentation](#)

To see what you may have missed in previous updates, click [here](#).

[For directions on loading updates to the RFMS software, click here.](#)

The same documentation is included in the online help system and can be accessed by pressing the F1 button at any RFMS screen. If something is on the screen you either do not recognize or understand, check this document, refer to the Help Files by pressing F1 or go to <https://rfmsinc.zendesk.com>

System Option

A new system option “Checking Accounts Visible to User” has been added for access to checking accounts via Next. The passwords set in core will not be applicable to Core. This new system option will default to no access in Next, so this will need to be set before any user has access to any checking account via Next. If a user creates a new checking account, by default that account will be available to that user.

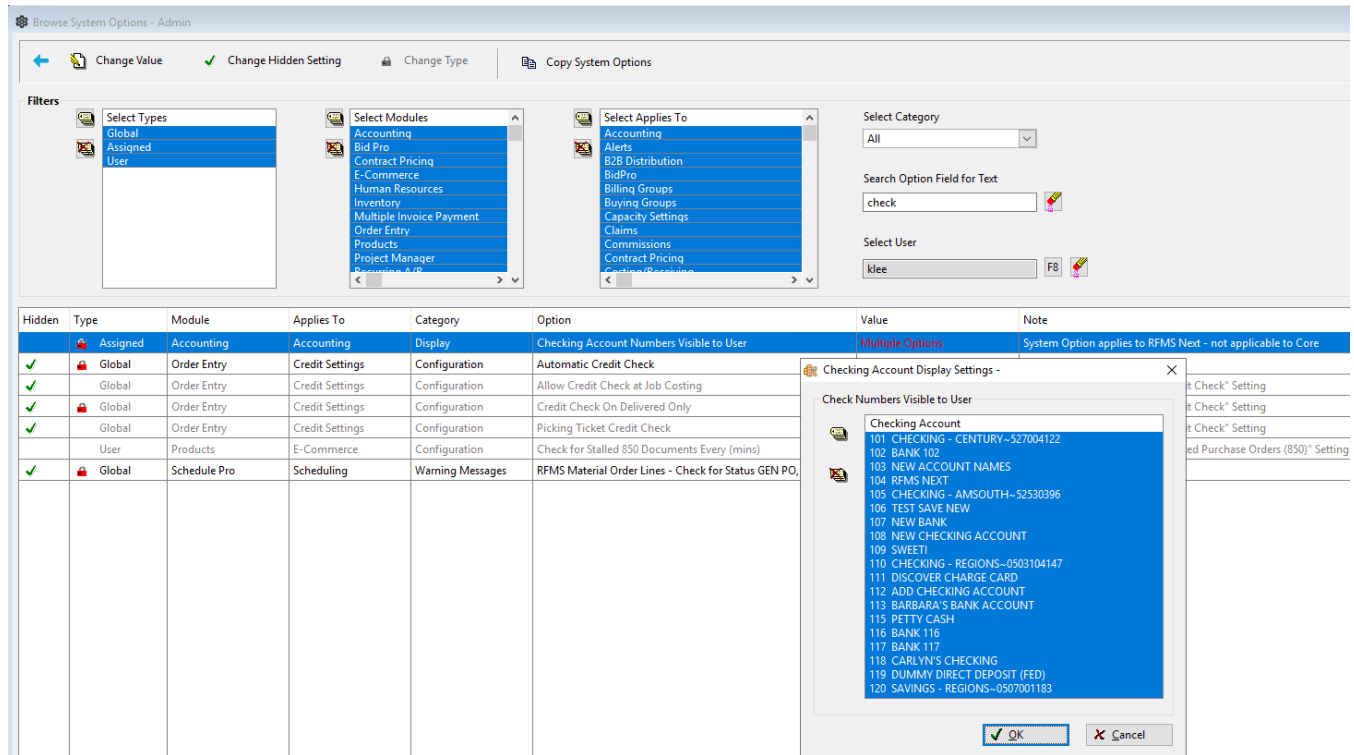


Figure Checking Account Visible Next

Inventory

Purchase Order Numbering

To allow for more system generated stock purchase order numbers the logic has been changed to include letters in the rotation. When letters are being used the following will be excluded (A, E, I, O, U, K).

Example after PO Number #ST02439-0001 is created the next PO number will be #ST0243B-0001

Human Resources

Withholding Changes

Canada T4 changes effective 7/1/23 are available in this update.

Table corrections from ID Idaho effective 5/23 were uploaded to the cloud and should have been to users system with the payroll run as of the effective date.

Changes for the UT Utah withholding effective 6/1/23 were uploaded to the cloud and should have been to user's system with the payroll run as of the effective date.

Changes for the ND North Dakota withholding effective 6/9/23 were uploaded to the cloud and should have been to user's system with the payroll run as of the effective date.

E-Commerce

The following have been added to the Material Classification Codes:

Wood (WOO)

FEN-Fencing

PLY-Plywood

COR-Cork

Composite Decking CDK

COE-Coextruded

RAL-Railing

EXT-Single Extruded

MIS-Miscellaneous

Wording on the message when trying to reset a PO which is already in the upload folder has been refined.

