



RFMS, INC.

Reference Library Documentation

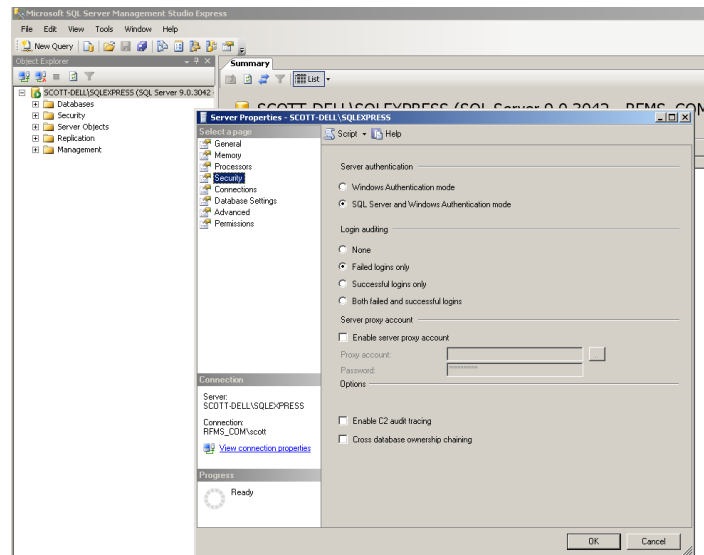
Changing SQL to Mixed Mode Authentication

Microsoft SQL

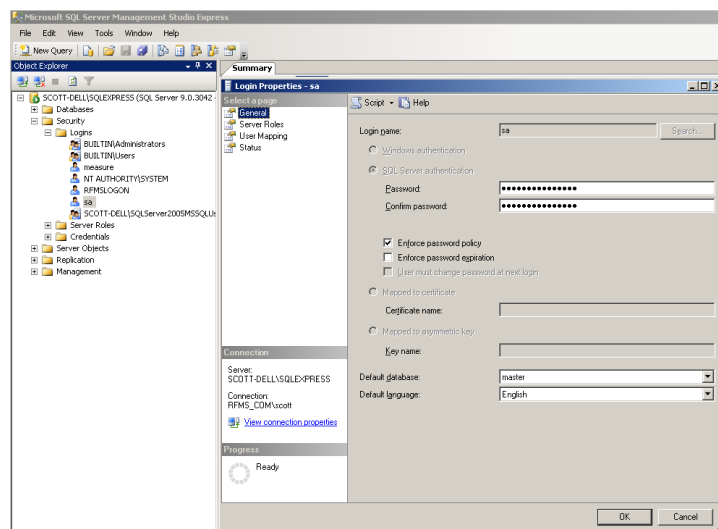
Changing SQL to Mixed Mode Authentication



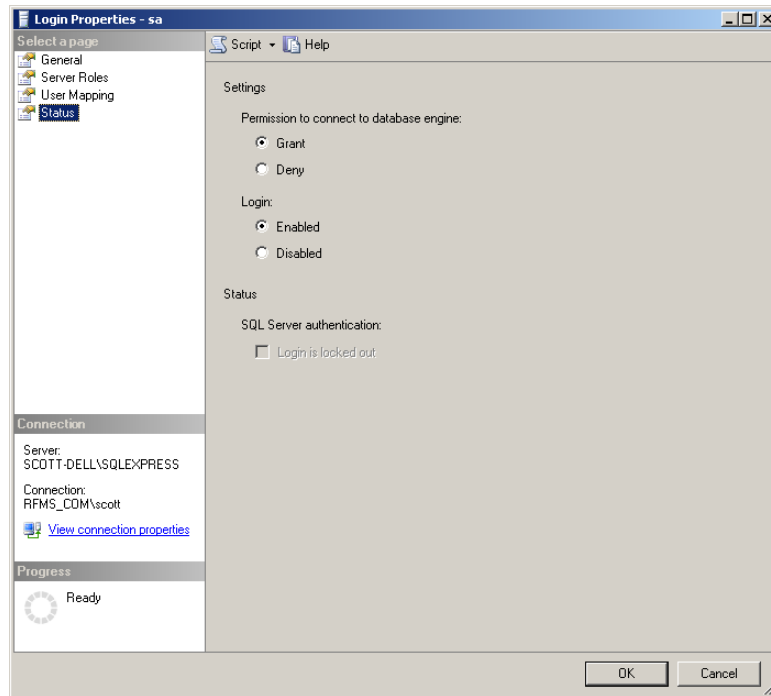
1. Login to the SQL Tools, right click on the server and go to properties.
2. Click on security and select “SQL Authentication and Windows Authentication”.



3. Expand Security and Logins. Right click SA and go to properties. Click the “General” Option on the left and make sure that it is set to SQL Server Authentication. Then plug in a password in both the “Password” and “Confirm Password” boxes.



4. Select "Status" and make sure that it is set to "Grant" and "enabled". Then select ok and restart the SQL Server



5. To test, go back to SQL Tools and at the login, choose SQL Authentication and plug in SA for username and password from step 3.