
RFMS for Windows

Shaw Importer



By RFMS, Inc.

Contents

- Installing the Shaw Import Manager** **3**
 - Download the Program3

- Getting Product Information from Shaw** **4**
 - Downloading the Data from the Internet.....4

- What's in the Shaw Import Data File?** **7**
 - Data Fields You Can Get7
 - How the Program Matches.....8

- Importing Shaw Products into RFMS** **9**
 - Starting the Shaw Import Manager9
 - Step 1 - Select the Shaw Products File.....9
 - Step 2 - Map Product Types to Product Codes.....10
 - Step 3 - Import Shaw File to RFMS.....12

- Index** **13**

Installing the Shaw Import Manager

Download the Program

1. Log onto the RFMS Website at www.rfms.com.
2. Click on the Program Files link.
3. Click the Shaw Import program.
4. Select "Save this program to disk".
5. Save the file in the same folder that contains your RFMS data files.

Downloading Files: If you are having problems downloading files, we suggest the following:

- **Internet Explorer:** Right click on the filename and select "Save Target As.." and follow the prompts to save the file to your local computer.
- **Netscape:** Right click on the filename and select "Save Link As.." and follow the prompts to save the file to your local computer.
- **AOL Users:** If you are downloading a large file which may take more than a few minutes, we suggest you open a "Chat session" and leave it open during the file download to prevent AOL from prematurely disconnecting you.

For instructions on starting the Shaw Import Manager program, see the section "Importing Shaw Products into RFMS" later in this documentation.

Getting Product Information from Shaw

Downloading the Data from the Internet

1. Log onto the Shaw website at shawinc.com and click on the Dealers link.



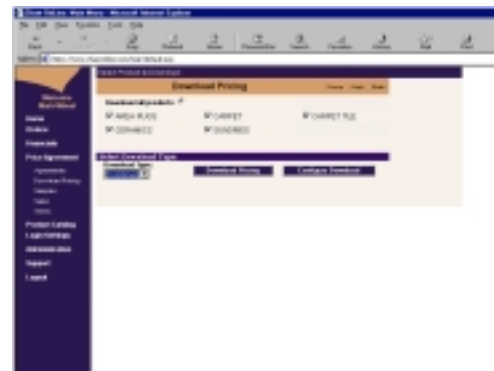
2. Enter your Login name and password.



- Click on the Price Agreement link and then the Download Pricing link.



- Select the products you want to receive by clicking in the appropriate boxes. Normally, you would select all products. Select **Combined** for the download type. Click on the Configure Download button.



- The Configure Download screen appears. Double-click on the data fields in the left column to move them to the right column. The fields appearing in the right column are the fields that will be included in your product file. This step is only necessary the first time you download. The only time you would need to return to this screen would be if additional fields were added by Shaw, or if you decided that you did not need some of the fields you had selected in the past.

NOTE: You do not have to select all fields, however, the RFMS program requires the following:

Style Number, Style Name, Cut Price, Roll Price, Selling Company Name and Product Type.



- When all the fields you want are shown in the right column, click on the Download Pricing button.
- The system will process for awhile and when finished display a screen of text. This text is the actual product data you will be downloading. At this point, click on File, Save As.



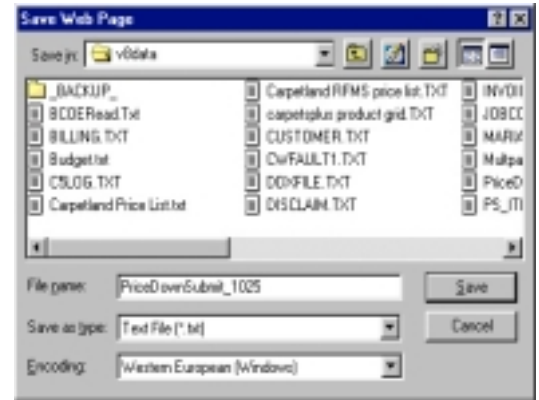
- The Save Web Page screen appears. You should save the file into the same folder that contains your RFMS data files.

FILE NAME: It is recommended that you change the last portion of the file name to show the date. In our example, we changed the last few characters of the file name to 1025, indicating October 25.

FILE TYPE: Be sure to select **Text File (*.txt)**.

ENCODING: Western European (Windows).

Click on Save to begin the download.



What's in the Shaw Import Data File?

Data Fields You Can Get

Style Number*

Style Name*

Cut Price*

Cuts at Roll (This is actually the Length necessary to get Cuts at Roll price)

Cuts at Roll Length (Usually the same as the above field)

Special Cut End Date

Special Cut Price

Selling Company Name*

Unit of Measure

Unit Price

Product Type*

Shipping From

Width

Roll Price*

Special Roll Price

* Fields that are required by the RFMS program.

How the Program Matches

RFMS Supplier Style = SHAW Supplier Style

Inventory Type of RFMS Product Code = Inventory Type of SHAW Product Code. For example, if the RFMS product has an item product code (03-79) and the Shaw product has an item product (03-79). They are considered equivalent. It doesn't have to be the exact item product code.

RFMS Manufacturer = SHAW Manufacturer

Importing Shaw Products into RFMS

Starting the Shaw Import Manager

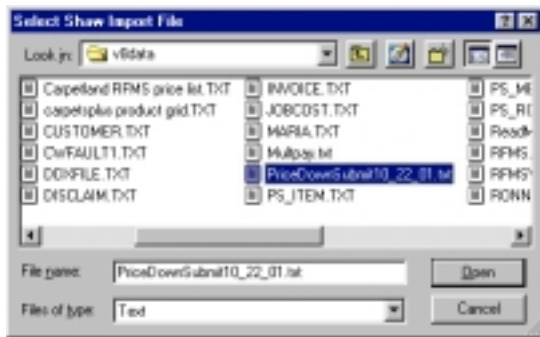
1. Open the RFMS for Windows Products program.
2. Click on File, Import, Shaw, Shaw Importer.
3. The main Shaw Import Manager menu appears.

Step 1 - Select the Shaw Products File

The first screen you will see is the Shaw Products Import Manager main menu. There are five buttons on this screen. The design of the program attempts to lead you through the import process by either disabling or enabling buttons depending upon the steps you have completed so far. The first button to be enabled is the **Select Shaw File** button. You must first specify the location of the Shaw data file you downloaded from the web.



When you click on Select Shaw File, the Select Shaw Import File dialog box appears. Find the Shaw "txt" file that you downloaded from the Shaw webpage. Click on the **OPEN** button to continue.



The import process begins and displays a status bar on your screen. After the status bar reaches 100%, you are returned to the Main Menu for the Import Manager program where you proceed to Step 2.



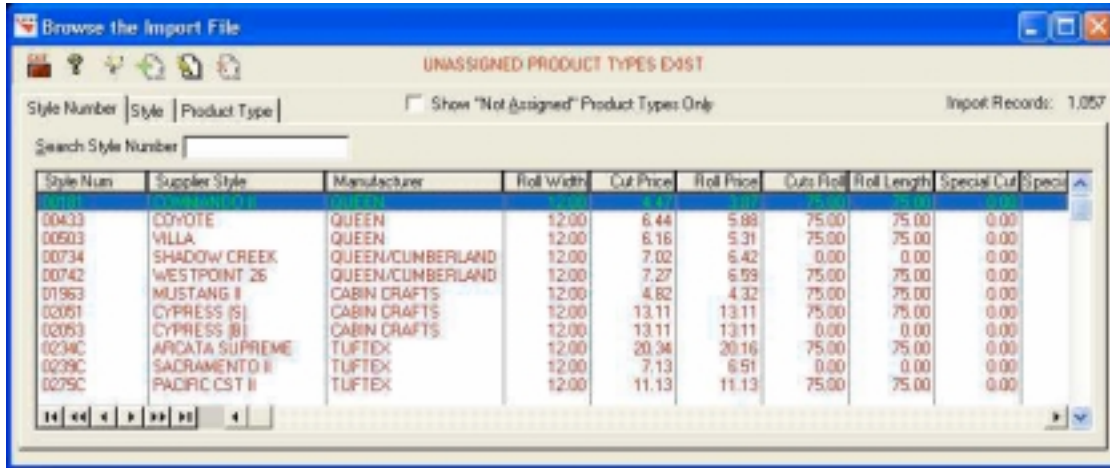
Step 2 - Map Product Types to Product Codes

The next button that is activated is the **View Shaw File** button, because that is the next logical step in this process. You should also note that the third button **Map Product Types to Product Codes** is shown in red. This is a visual clue that there are Product Types named in the Shaw file that are not mapped to an RFMS Product Code. The second visual clue is that the fourth button, **Import Shaw File to RFMS**, is disabled until all Product Types have been mapped to Product Codes. Pressing either **View Shaw File** or **Map Product Types to Product Codes** will take you to a screen that displays the data contained in the Shaw download file.

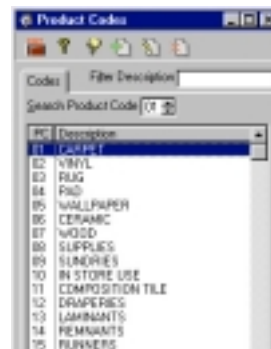
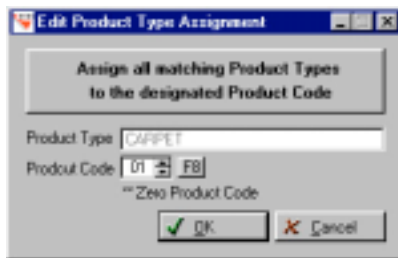


This screen displays the data contained in the Shaw download file and is used to map the Product Types to the RFMS Product Codes.

Any product type that is not assigned or mapped to an RFMS product code is displayed in red. This makes it easier for you to tell what product codes you have or have not mapped.



To assign a Product Type to an RFMS Product Code, click on the **EDIT** button at the top of the screen. The following screen appears.



The Product Type shown is what came over from the Shaw download on the record that was highlighted when you clicked the **EDIT** button. In our example, the Product Type is Carpet. In the Product Code field, either type in 01 for Carpet or click on the **F8** button to display the RFMS Product Code listing. Click OK to save the mapping. All products with the Product Type of CARPET will now be shown in black on the Browse screen. Continue selecting the next Product Type shown in red, until all Product Types are assigned. When all Types have been assigned the Browse screen will be empty and the message **Unassigned Product Types Exist** will be removed from the top of the Browse screen.

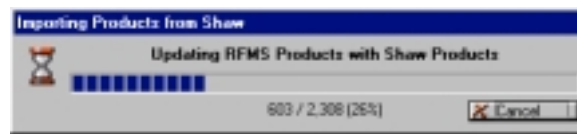
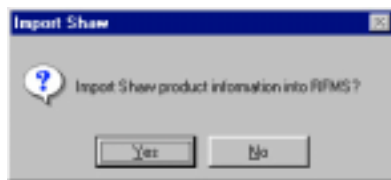
You are now returned to the Main Menu, where the next button **Import Shaw File to RFMS** should be enabled.

Step 3 - Import Shaw File to RFMS

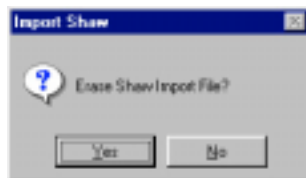
Now that you have mapped all Product Types to the corresponding RFMS Product Code, the fourth button, **Import Shaw File to RFMS**, is enabled.



Click on the Import button to display the screen below. Click on Yes to begin the import. A status bar is shown as the RFMS Products file is updated with the Shaw Products data.



After the import process has completed, a box is displayed where you can choose to erase the Shaw Import file. If the import went properly, you should click Yes to delete the file from your harddrive.



Index

A

AOL 3
Assigning Product Types 10

C

Configure Download 5

D

Data Fields in the Shaw File 5, 7
Deleting the Shaw File 12

E

Encoding 6

F

File Type 6

I

Importing into RFMS 10, 11, 12
Internet Explorer 3

L

Login name 4

M

Main Menu 9, 10, 11
Mapping Product Types 10

P

password 4
Price Agreement 5

R

RFMS Website 3

S

Select Shaw File 9, 10
Shaw Data File Contents 5, 7

U

Unassigned Product Types Exist 11

V

View Shaw File 10