



RFMS, INC.

Reference Library Documentation

Detach and Attach a SQL Database

Microsoft SQL

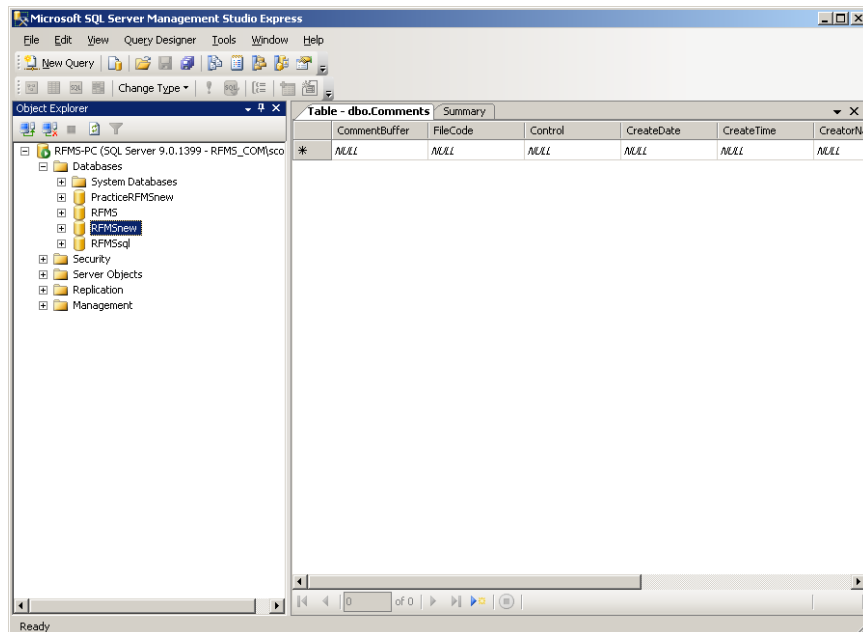
Detach a SQL Database



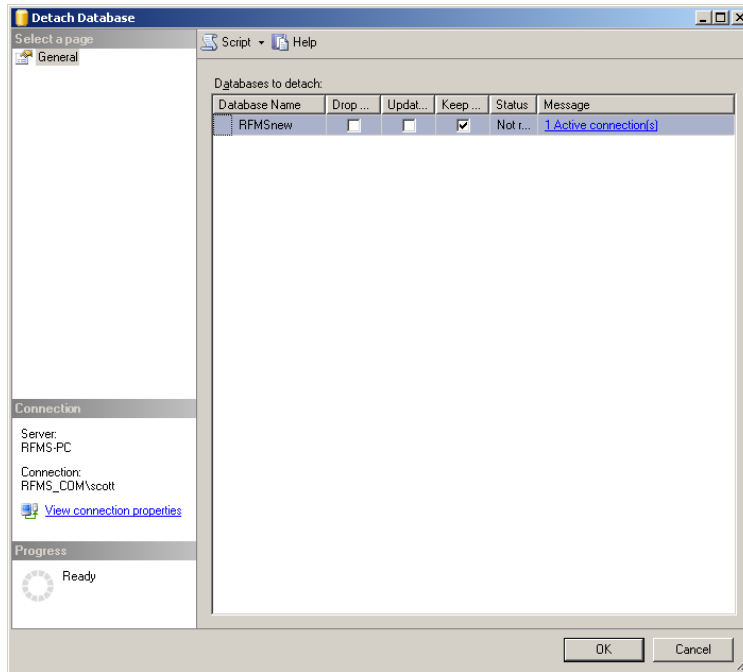
This document will be helpful when your IT Professional needs to either migrate the SQL Database from one server to another or from one Hard Drive to another Hard Drive.

Note: If you are moving from one server to another server, they will need to contact RFMS Technical Support to assist in creating the SQL RFMSLogon Account.

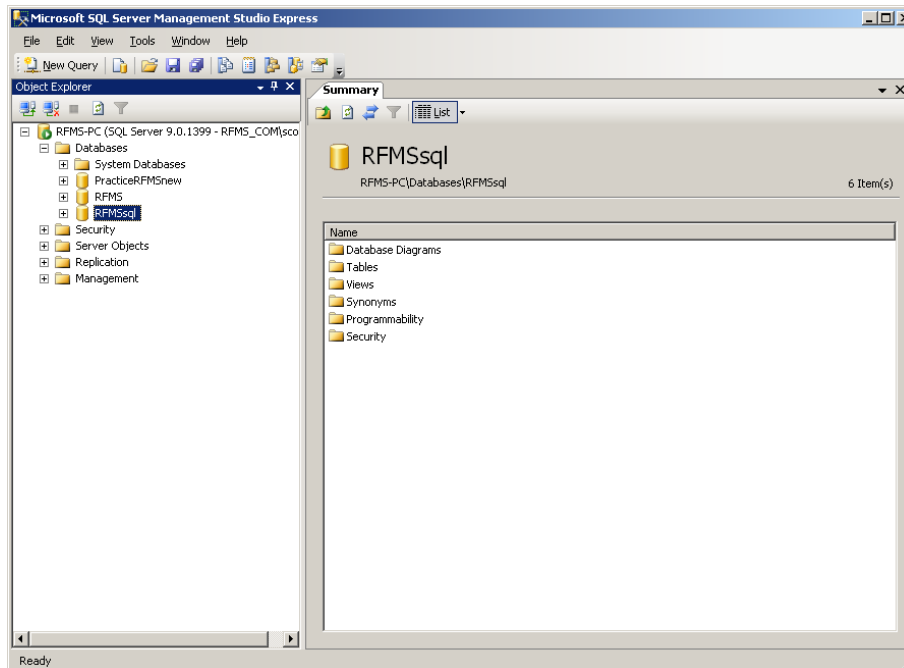
1. Refer to [“SQL RFMS - Determine Location of Database Files”](#) document to obtain the location of the Database Files.
2. Before doing the below procedures, make sure everyone is out of the system. Then go to the server and open up the Microsoft SQL Server Management Studio Express Program. Expand the Server Name and Databases. Then right click on the database you want to detach, select tasks and detach.



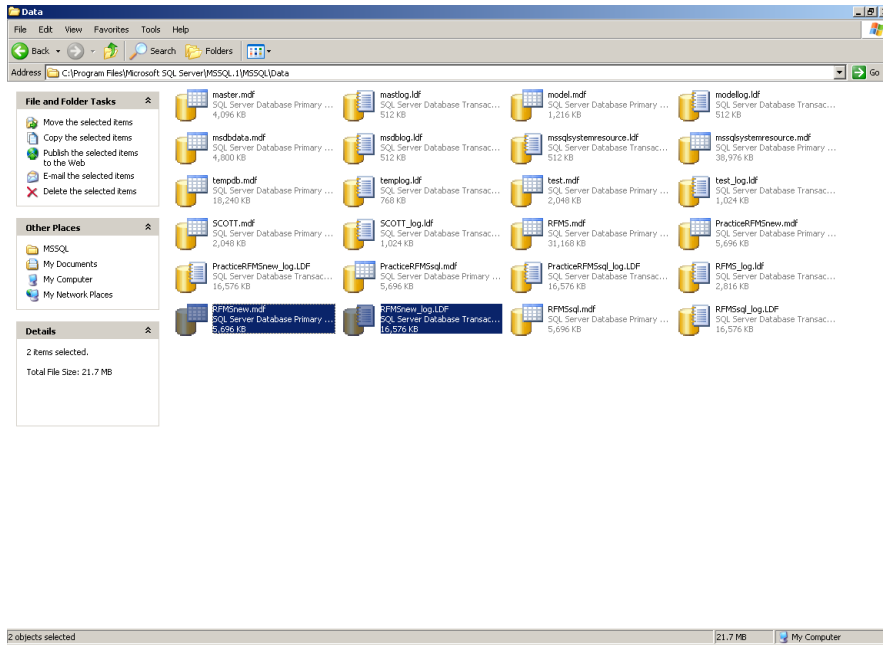
3. You will see a screen like below. Hit ok to begin the detach process.



4. Note that the database RFMSNew is not in the list anymore. Minimize this screen and proceed to moving the database.



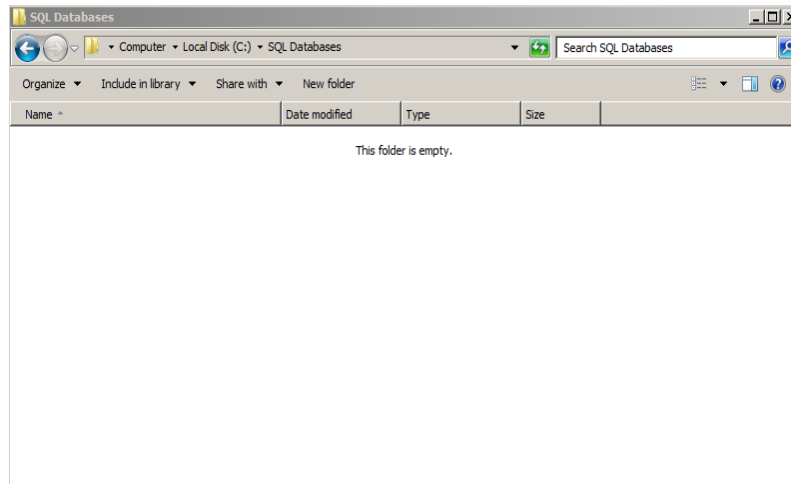
5. You now want to browse to the location of the database files from Step 1. Highlight the .mdf and .ldf files and select cut.



Attach a SQL Database

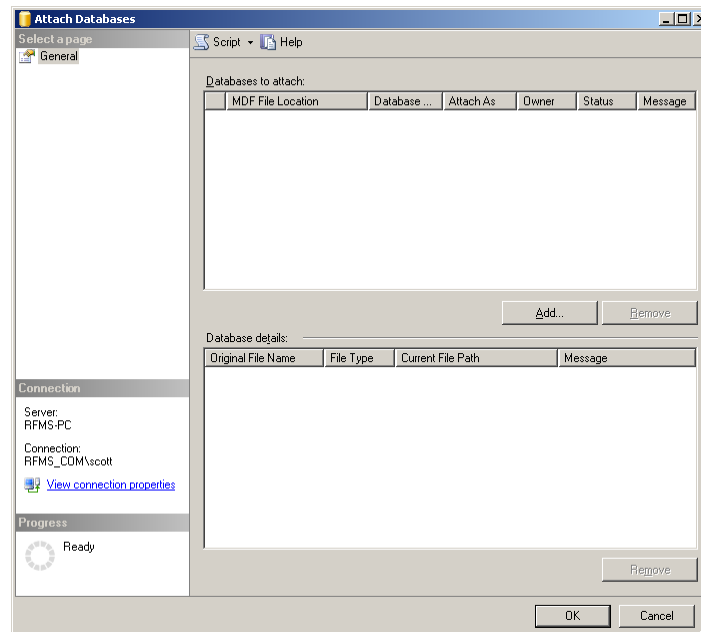


1. Browse to the new Location / new Server and paste the two files

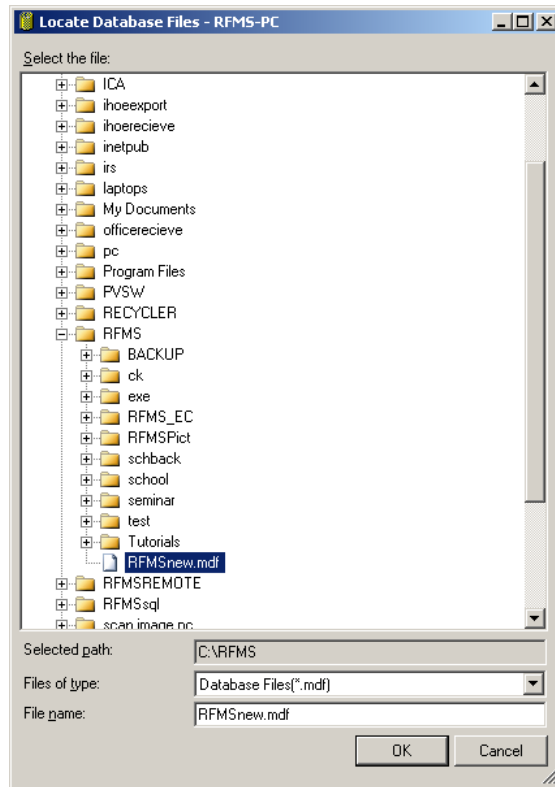


Note: If this is a new Server make sure to install SQL with Management Studio. Choose Mixed Mode and provide an SA Password

2. Open up the SQL Tools and right click on database. Then select Attach, you will see a screen like below. Click on Add and browse to the new location for the mdf and ldf files, as shown in the next screen shot.



3. Select the .mdf file and hit ok



4. The next screen shows the two files, make sure that the path is correct for the new location and hit ok

