



RFMS, INC.

Reference Library Documentation

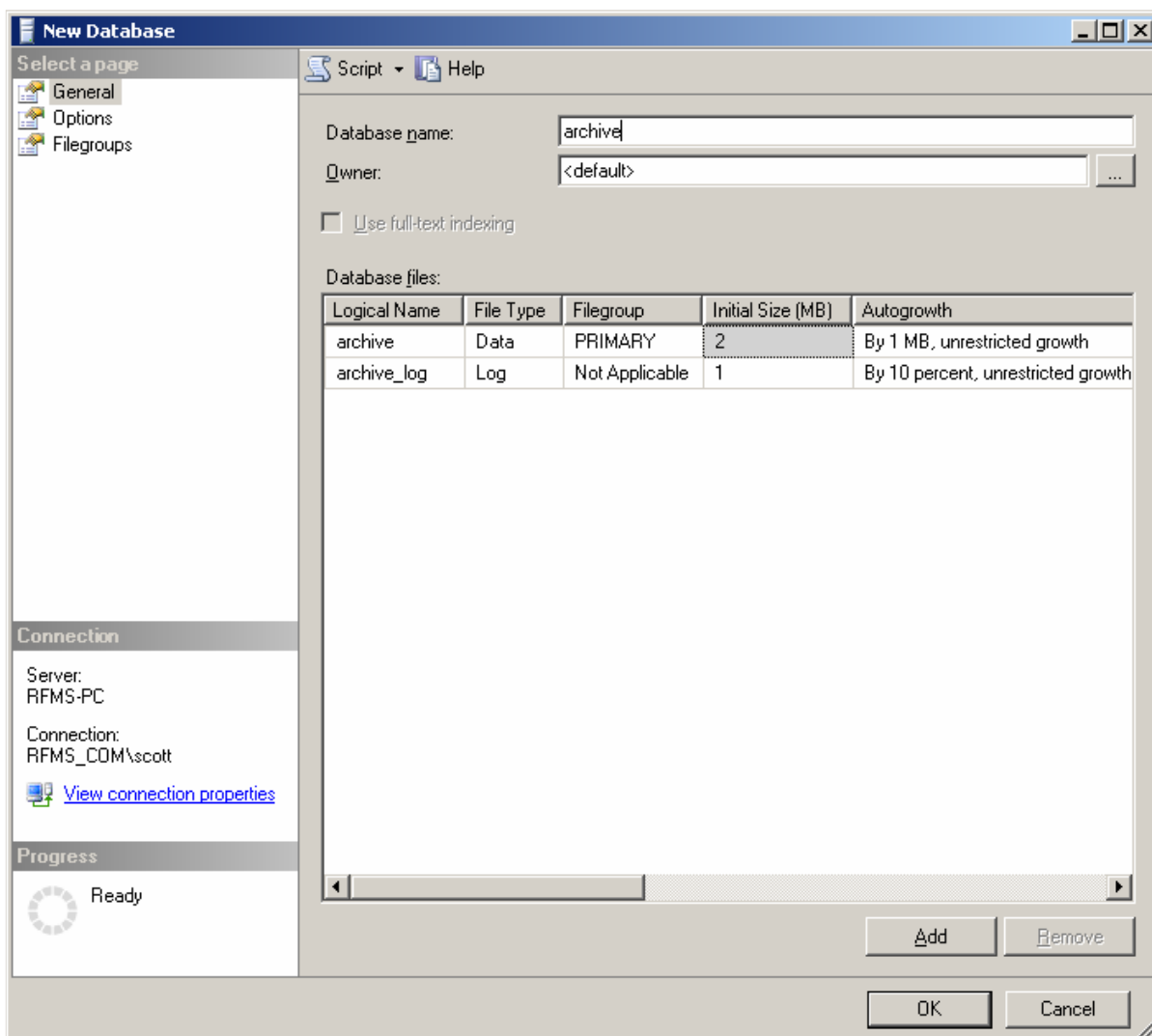
Creating a Blank Database

Microsoft SQL

Creating a Blank Data Base



1. Go to Start – Programs – Microsoft SQL 2005 or Microsoft SQL 2008 – SQL Server Management Studio Express. From there select connect when prompted, making sure that you have the correct name of the server in the server box.
2. Right click on Databases and select “New Database”. You will see a screen like the one below.



3. Type in the name of the Archive Database and hit ok, here we used Archive. You should see your database in the list now.