



RFMS, INC.

Reference Library Documentation

Conversion Manual

Microsoft SQL

TABLE OF CONTENTS

GENERAL INFORMATION FOR VERSION 10	3
SQL RFMS CONVERSION	4



General Information for Version 10

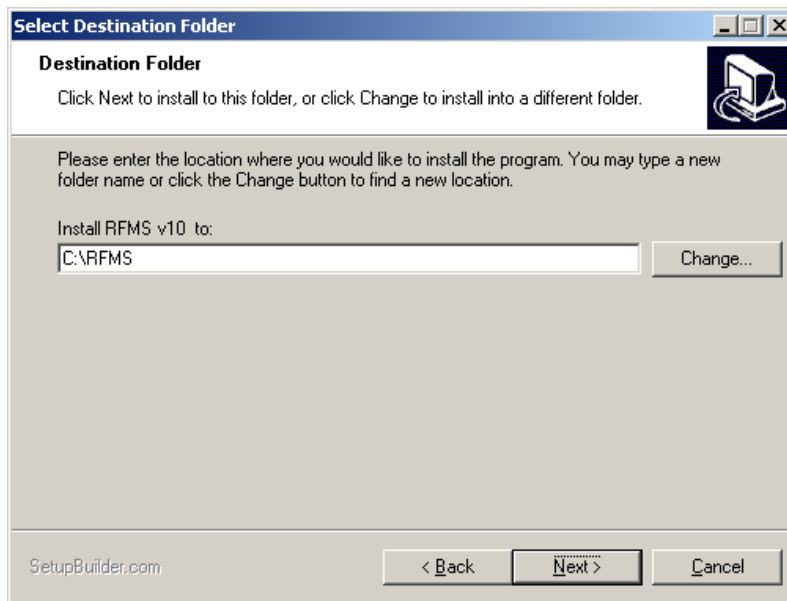
We recommend that you have your IT Professional perform this installation and if need be, schedule an appointment prior to the installation with any questions.

Two major considerations for the MS SQL Express Version is database size and user count. If your database is less than 1 GB and you have less than 15 users you can use the MS SQL Express. If you have a database over 1 GB or you have more than 15 users you will need to purchase MS SQL Workgroup or MS SQL Standard. You will want to check with your Local IT Professional on which one is more suitable for your environment. If installing MS SQL Express manually or if you are using MS SQL Workgroup or Standard, make sure to set for Mixed Mode (SQL Authentication and Windows Authentication).

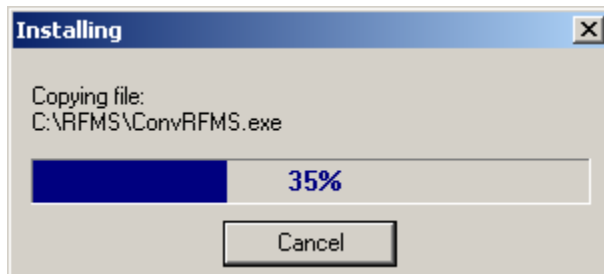
SQL RFMS Conversion

Note: Make sure you have SQL installed before running setup.exe.

1. Browse the RFMS Conversion CD and double click on the Setup.exe file. This will begin the Conversion to RFMS SQL.
2. Select next on the welcome screen, which will take you to a screen like below. By default, the installation will select C:\rfms as the installation folder. If you have installed RFMS do a different location, simply select the “Change...” button and browse to another location or type in the location and select next.



3. The next screen is a confirmation screen, if all looks correct hit “Next”. After hitting next to start the conversion, you will see a screen like below.



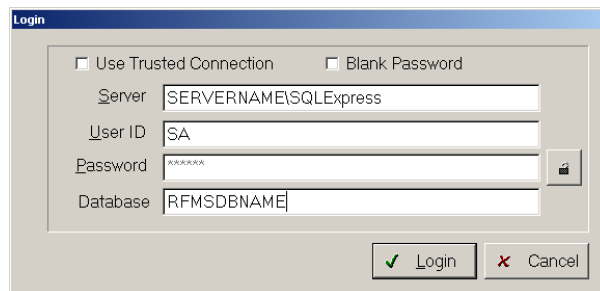
4. When this process is finished, you will be directed to a Login Screen. The Boxes should auto fill with the following information. Simply select Login once all of this is correct to begin the conversion.
- Server Name – (make sure this information matches the information from the SQL Management Studio Login for the Server Name) as shown below



- user ID – SA is the default User ID used for the conversion
- Password – See Note 1
- Database Name – The default name is *RFMS*, however, it is recommended that you change this name.

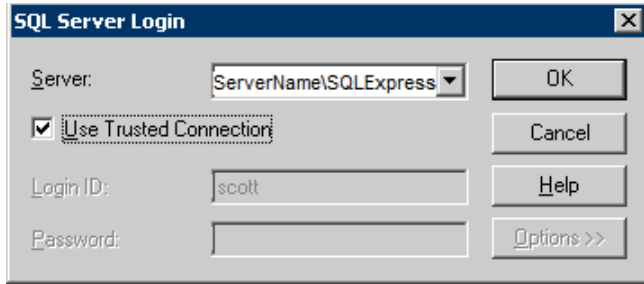
Note 1: You will need to click on the lock icon on the right side next to the password field and type your SA password.

Note 2: Make sure the server name is correct and hit login. You may need to put your SQL Instance in after the server name. If your Server is ServerName and your SQL Instance is "SQL Express", you would type in ServerName\SQLExpress.



Note: If you get a message about unable to login, go to SQL Management Studio and change authentication mode from "Windows Authentication" to SQL Authentication". Then put SA for username and the SA Password you used during installation of SQL. If this works, confirm correct Server Name and instance name is used. If this doesn't work then make sure that SQL is in mixed mode.

5. Once you select Login, the installation should continue. If you get a box like below, check the box for “Use Trusted Connection” and click ok.



6. The databases will now be converted from a Pervasive DB to MS SQL DB. This operation takes about 1 hour for every 500mb of database size. To find out the size of your database, navigate to the RFMS folder, sort by type, highlight all the .dat files and select properties.
7. Once the conversion completes, click Finish and check the SQL10.log file for errors. This file will be in the RFMS Folder. It is imperative that you test the RFMS Program (reports, printing, operation, etc...) prior to performing real conversion or before going live.

