



VERSION 18 INTERFACE MODE

RJ PETERSEN

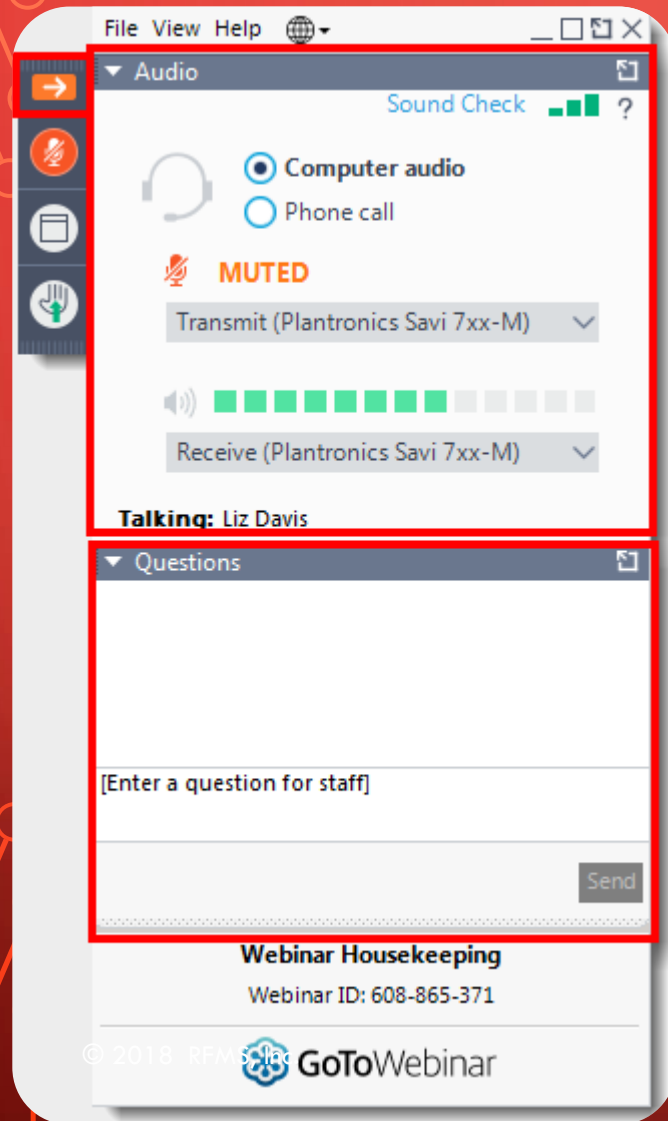
RPETERSEN@RFMS.COM

800-701-7367 X 3525

© 2018 RFMS, Inc.

The webinar will begin shortly... Thank you for attending!

How to Participate in today's Webinar



Open and close your control panel

Join audio:

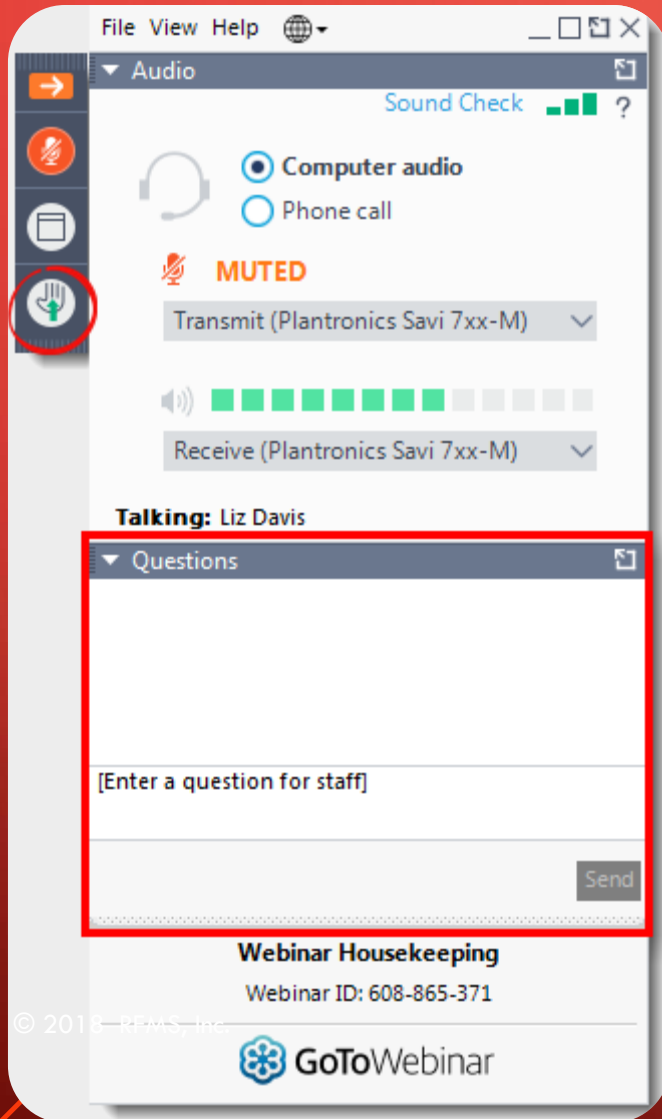
- Choose **Mic & Speakers** to use VoIP
- Choose **Telephone** and dial using the information provided

Submit questions and comments via the Questions panel

Note: Today's presentation is being recorded and will be provided within 24 hours.

Time for Questions!

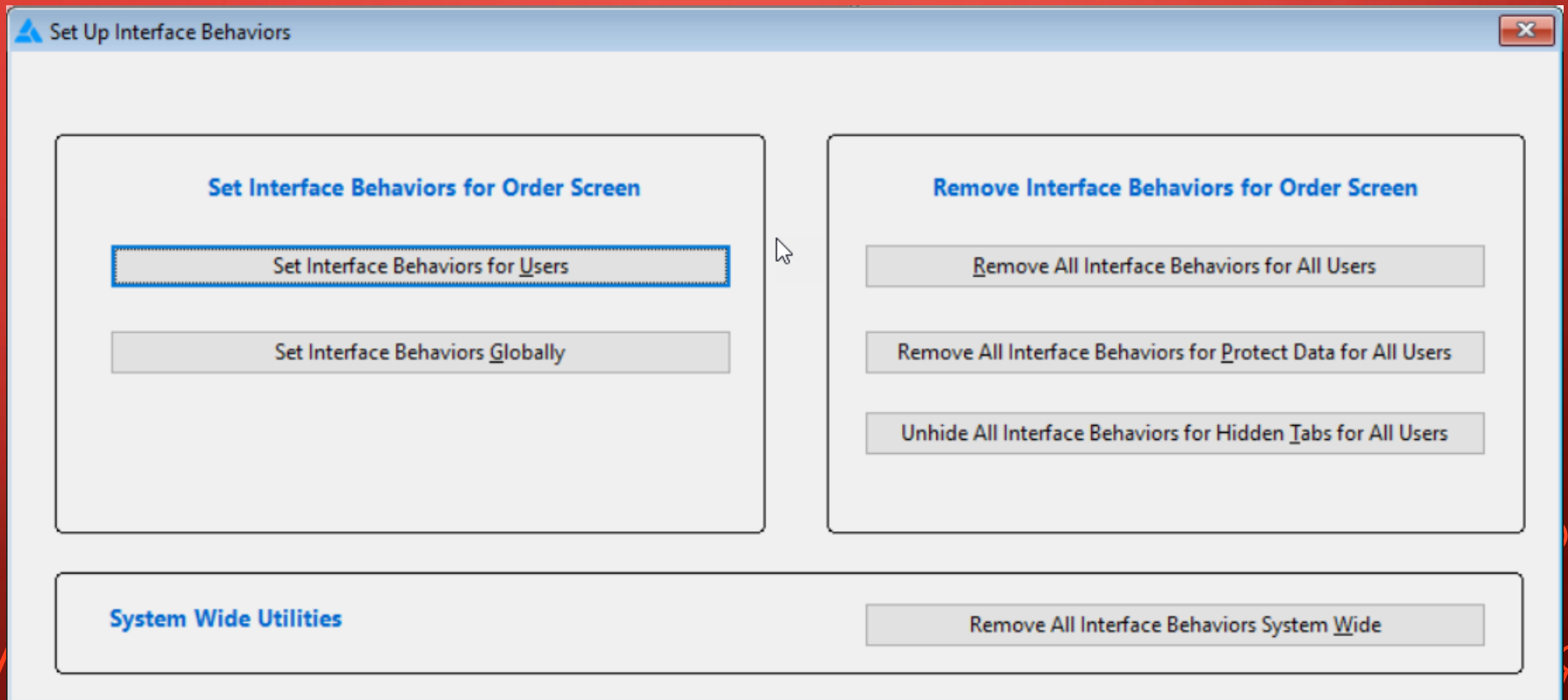
(Use hands for unmuting!)



- Please continue to submit your text questions and comments using the Questions panel during the presentation. We have panelists on the call who will answer your question for you.
- At the end of the presentation, please raise your hand to be unmuted for verbal questions.

Note: Today's presentation is being recorded and will be provided within 24-48 hours.

INTERFACE MODE



WHAT EXACTLY IS INTERFACE MODE?

- Interface mode gives the ability to make fields required, editable or hidden based on your company's needs.
- Interface Mode also gives the ability to determine which tabs are hidden
- <https://rfmsinc.zendesk.com/hc/en-us/articles/360007714774-Interface-Mode>

WHERE IS INTERFACE MODE AVAILABLE?

- Interface Mode is available on the following screens:
 - Edit Order, Quote, or Claim screens,
 - Customer screen
 - Client Management Projects.

HOW DO I USE IT?

- Be in the proper screen – must be inserting a new record
- Remember it is only available in selected screens, fields and tabs (marked in green when in Interface Mode)
- 3 keyboard short cuts to remember:
 - Ctrl + Alt + F9 – to enter Interface mode
 - Ctrl + F –to configure Interface Mode for a FIELD
 - Ctrl + T – to configure Interface Mode for a TAB

IMPORTANT NOTES

- When in Interface Mode, all fields that can be set as required will become enabled and all tabs will be unhidden. This allows for changes to be made for disabled fields and hidden tabs.
- Some computers cannot access the F9 key when FN is turned on.
- A Level 1 password is required to enter Interface Mode.

MORE NOTES...

- Interface Mode must be exited to be able to add any new data.
- While in Interface Mode, Ctrl + Alt + F9 can be used to return to the Set-Up Interface Behaviors screen.
- Interface Mode is not available for buttons. Buttons should be password protected.
- The Interface Behavior is not available on fields that are set to required by program or system options.



UPCOMING WEBINARS

RFMS Core Webinars

<i>Date</i>	<i>Time</i>	<i>Description</i>
Sep 20th, 2018	2:00 pm CDT	Version 18 Interface Options
Sep 27th, 2018	2:00 pm CDT	Purchasing and Inventory Control
Oct 9th, 2018	2:00 pm CDT	Measure Mobile (Standalone)
Oct 11th, 2018	2:00 pm CDT	Balancing Inventory to the General Ledger
Oct 16th, 2018	2:00 pm CDT	RFMS Mobile
Oct 25th, 2018	2:00 pm CDT	Key RFMS Sales Reports
Nov 13th, 2018	2:00 pm CDT	Measure Mobile with RFMS
Nov 15th, 2018	2:00 pm CDT	Products Management
Nov 20th, 2018	2:00 pm CDT	RFMS Mobile
Nov 29th, 2018	2:00 pm CDT	Billing Groups and Partial Billing (including AIA)
Dec 11th, 2018	2:00 pm CDT	Measure Mobile (Standalone)



UPCOMING TRAINING EVENTS

- RFMS and Measure Bootcamps
- Owners Conference April 24-26, 2019

Upcoming Workshops			
<i>Date</i>	<i>Location</i>	<i>Description</i>	
October 15th, 2018	Chicago, IL	Measure Boot Camp – Basic Training – Chicago, IL – Oct. 15, 2018 - 10 Seats Left	HOTEL + TRAVEL INFO REGISTER
October 16th, 2018	Chicago, IL	Measure Boot Camp – Advanced – Chicago, IL – Oct. 16, 2018 - 11 Seats Left	HOTEL + TRAVEL INFO REGISTER
October 18th, 2018	Chicago, IL	RFMS Inventory – Chicago, IL – Oct. 18, 2018 - 11 Seats Left	HOTEL + TRAVEL INFO REGISTER
October 19th, 2018	Chicago, IL	RFMS Accounting – Chicago, IL – Oct. 19, 2018 - 9 Seats Left	HOTEL + TRAVEL INFO REGISTER
October 18th, 2018	Las Vegas, NV	Measure Boot Camp – Basic Training – Las Vegas, NV – Oct. 18, 2018 - 15 Seats Left	HOTEL + TRAVEL INFO REGISTER
October 19th, 2018	Las Vegas, NV	Measure Boot Camp – Advanced – Las Vegas, NV – Oct. 19, 2018 - 15 Seats Left	HOTEL + TRAVEL INFO REGISTER

HOW DO I SCHEDULE TRAINING ON RFMS.COM?

The image shows a screenshot of the RFMS website. At the top right, there are links for "My Account", "Support", and a phone number "1-800-701-7367". The main navigation menu includes "PRODUCTS", "INDUSTRIES", "TRAINING", "NEWS", and "CONTACT". A red arrow points to the "TRAINING" link. Below the navigation menu, there is a large banner with the text "MEASUREMENT" and "Create proposals". To the right of the banner, there is a vertical list of training options: "REGIONAL WORKSHOPS CALENDAR", "WORKSHOPS", "LIVE WEBINARS", "FREE PRE-RECORDED WEBINARS", "CLASSROOM TRAINING", "E-LEARNING", "CONSULTING", and "B2B TRAINING". A large red arrow points from the text "Go to these options to schedule classroom, online or onsite training!" to the "CLASSROOM TRAINING" and "E-LEARNING" options. At the bottom left, there is a copyright notice: "© 2018 RFMS, Inc." At the bottom right, there is a "GET STARTED" button.

My Account Support 1-800-701-7367

RFMS
Systems for Success

PRODUCTS INDUSTRIES **TRAINING** NEWS CONTACT

REGIONAL WORKSHOPS CALENDAR

WORKSHOPS

LIVE WEBINARS

FREE PRE-RECORDED WEBINARS

CLASSROOM TRAINING

E-LEARNING

CONSULTING

B2B TRAINING

MEASUREMENT
Create proposals

your estimate
Measure Me
te

Go to these options to schedule classroom, online or onsite training!

GET STARTED

© 2018 RFMS, Inc.



ANY QUESTIONS?

PLEASE TYPE YOUR QUESTION IN THE QUESTION BOX OR
RAISE YOUR HAND TO BE UNMUTED BY THE PRESENTER

© 2018 RFMS, Inc.



THANK YOU FOR ATTENDING!

We look forward to seeing you on a webinar in the future!

© 2018 RFMS, Inc.